



MERRITT
ALUMINUM PRODUCTS
COMPANY

DYNA-DECK FLUSH MOUNT

THE MODULAR DECK SYSTEM BY MERRITT

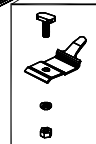
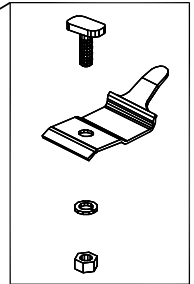
CAUTION: THIS ASSEMBLY IS TO BE USED IN CONJUNCTION WITH ALL FEDERAL REGULATIONS. FAILURE TO COMPLY WITH FEDERAL REGULATIONS AND/OR RECOMMENDED INSTALLATION CAN RESULT IN SERIOUS INJURY OR DEATH.

ASSEMBLY INCLUDES

- 2 OR 3 DECK PLANKS (3 SHOWN)
- 2 DRESS CAPS
- #440 ANCHOR KITS (1 KIT PER PLANK)

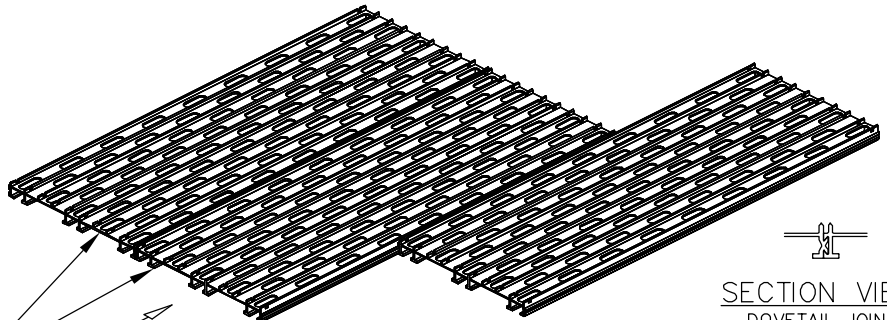
#440 ANCHOR KIT INCLUDES

- 2 TEE HEAD BOLTS
- 2 SPRING CLIPS
- 2 LOCK WASHERS
- 2 HEX NUTS



STEP ①

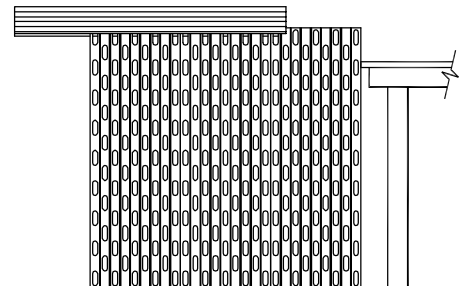
SLIDE PLANKS TOGETHER AT DOVETAIL JOINTS. FOR EASE OF ASSEMBLY IT IS HIGHLY RECOMMENDED TO APPLY A LIGHT LUBRICANT TO THE TONGUE AND GROOVE AREA PRIOR TO SLIDING PLANKS TOGETHER.



SECTION VIEW
DOVETAIL JOINT

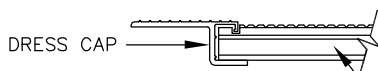
PLANK ENDS SHOULD BE FLUSH

SLIDE DRESS CAPS OVER ASSEMBLED PLANKS



STEP ②

SLIDE DRESS CAP OVER ENDS OF ASSEMBLED PLANKS



SECTION VIEW

ASSEMBLED PLANKS

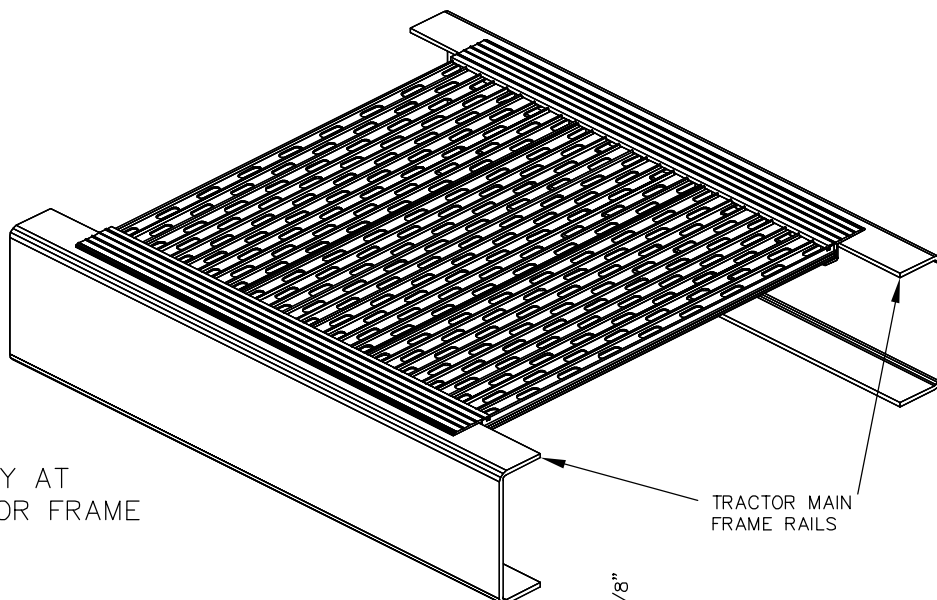
TIP TO EASE CAP INSTALLATION PROP PLANK ASSEMBLY AGAINST A SOLID OBJECT (A TABLE FOR EXAMPLE)

REVISION	LTRDATE	DESCRIPTION	BY	SCALE	NONE	MERRITT	MERRITTPRODUCTS.COM
			DWN BY	TPK		ALUMINUM PRODUCTS	800-525-0107
			REF			COMPANY	1011 14TH ST
			WEIGHT	N/A		TITLE	FORT LUTON CO. 80612
			DATE	7/1/16		# 440 DECK COVER FLUSH	
			DWG			MOUNTING INSTRUCTIONS	
						LSRSD0015	B

MERRITT
ALUMINUM PRODUCTS
COMPANY
ASSEMBLY INSTRUCTIONS
(CONTINUED)

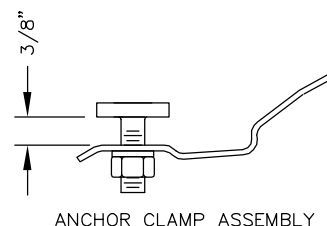
STEP ③

POSITION DECK COVER ASSEMBLY AT DESIRED LOCATION OVER TRACTOR FRAME



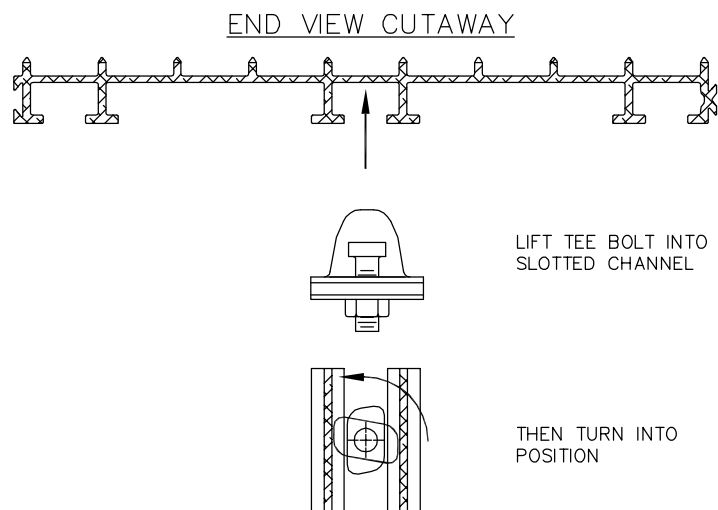
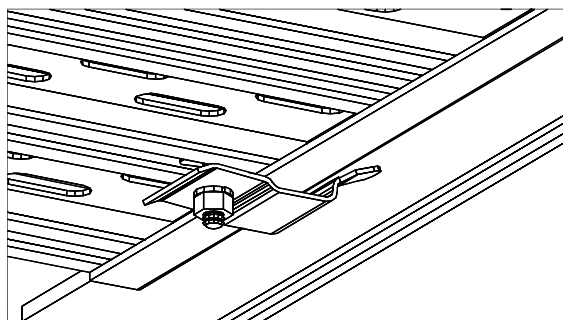
STEP ④

PRE-ASSEMBLE ANCHOR CLAMP ASSEMBLY WITH APPROXIMATELY 3/8" BETWEEN SPRING CLIP AND HEAD OF TEE BOLT



STEP ⑤

FROM UNDERNEATH, INSERT ANCHOR CLAMP ASSEMBLY UP INTO MIDDLE CHANNEL OF EACH END OF DECK PLANK. TURN TEE BOLT UNTIL TAPERED SIDES OF TEE BOLT HEAD COME INTO CONTACT WITH SIDES OF PLANK CHANNEL.



STEP ⑥

WHILE MAINTAINING TEE BOLT POSITION, SLIDE ANCHOR CLAMP ASSEMBLY UNTIL SPRING CLIP IS COMPLETELY UNDER FRAME

STEP ⑦

TIGHTEN NUT USING 1/2" DEEP WELL SOCKET UNTIL CLAMPING IS SECURE

STEP ⑧

REPEAT STEP 5 THROUGH STEP 7 UNTIL BOTH ENDS OF ALL PLANKS ARE SECURELY CLAMPED

