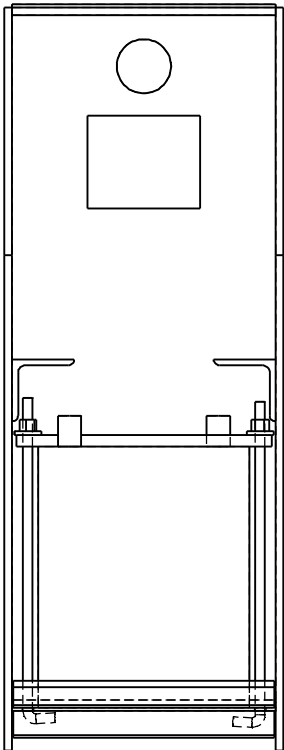
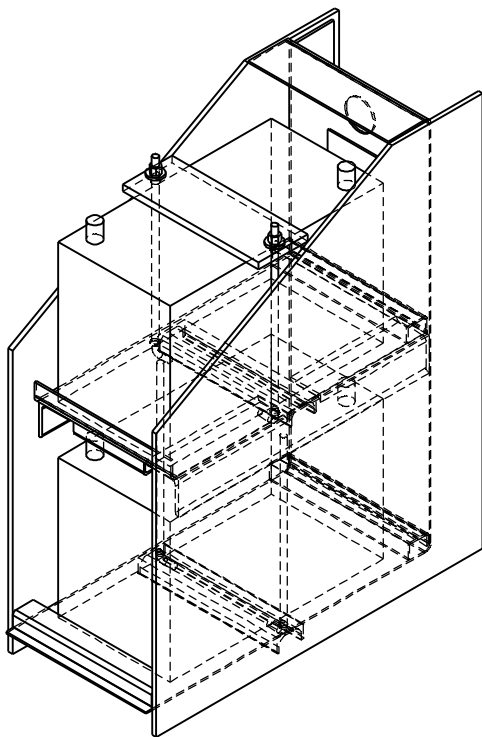


# BATTERY MOUNT KIT INSTRUCTIONS

## HALF STACK BOX

- 1) MATCH DRILL 3/8" HOLES THROUGH THE CHANNEL IN THE BOTTOM OF THE BOX. POSITION SHELF ON ANGLES AND MATCH DRILL HOLES THROUGH THE ANGLES ALSO.
- 2) INSTALL LOWER BATTERIES.
- 3) SET A UHMW STRAP ON TOP OF THE BATTERIES AND RUN L-BOLTS UP THROUGH THE HOLES THAT YOU DRILLED IN THE LOWER CHANNEL AND THROUGH THE STRAP.
- 4) INSTALL WASHERS AND NUTS ONTO L-BOLTS AND TIGHTEN SECURELY.
- 5) POSITION THE SHELF ON THE ANGLES.
- 6) SET BATTERIES ON SHELF.
- 7) SET A UHMW STRAP ON TOP OF THE BATTERIES AND RUN THE 2 OUTSIDE L-BOLTS UP THROUGH THE HOLES THAT YOU DRILLED IN THE ANGLES AND THROUGH THE STRAP. THESE L-BOLTS WILL HOLD THE SHELF AND BATTERIES IN PLACE.
- 8) INSTALL WASHERS AND NUTS ONTO L-BOLTS AND TIGHTEN.



RECOMMENDED MAINTENANCE:  
CHECK ALL MOUNTING BOLTS FOR PROPER TORQUE AFTER THE FIRST 1000 MILES OF SERVICE AND PERIODICALLY INSPECT FOR PROPER TORQUE AND SOUNDNESS OF THE ENTIRE BOX INSTALLATION EVERY 90 DAYS OR LESS. IF DURING INSPECTION A DISCOVERY OF DAMAGED PARTS, CRACKS IN ANY PART OF THE UNIT, OR A FAILURE OF ANY PART OF THE UNIT IS DISCOVERED THE OPERATOR IS TO IMMEDIATELY REPLACE THE DISCOVERED PROBLEM.

D	4	11-2010	NUT, LOCK 5/16-18 ZINC NC NYLON	
C	4	11-0099	BOLT, BATTERY "L" 5/16-18 x 10.5	
B	2	87-4150-077	STRAP, BATTERY HOLD DOWN HALF STACK BOX	
A	4	11-7035	WASHER, FLAT 5/16 SAE ZINC	

DESCRIPTION	BY	SCALE: NONE	TITLE KIT, BATTERY MOUNT HALF STACK INSTRUCTIONS	
		DWN BY: TPK		
		REF # 3564		
		WEIGHT		
		DATE 3/1/11	DWG LSRSD0117	REV