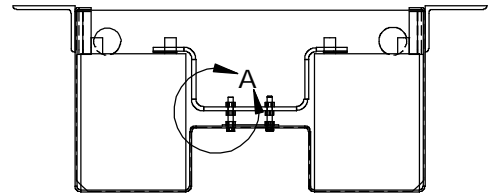
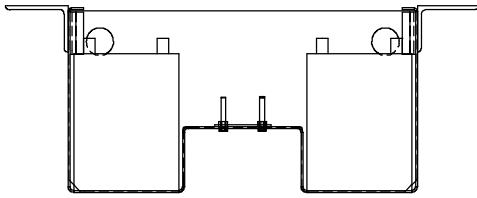


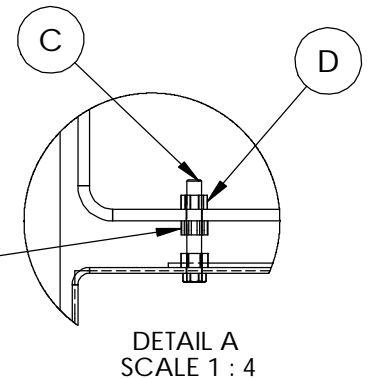
IN FRAME BOX BATTERY HOLD DOWN KIT INSTRUCTIONS



1) INSTALL BOLTS THROUGH THE HOLES IN THE BOTTOM OF THE BOX.

2) THREAD A NUT ONTO EACH BOLT AND TIGHTEN TO CREATE A MOUNTING STUD.

3) THREAD ANOTHER NUT ON TO STUD WITH THE SERRATIONS FACING UP. THIS NUT WILL PROVIDE HEIGHT ADJUSTMENTS FOR DIFFERENT SIZE BATTERIES. (NOTE: THIS NUT MAY NOT BE NEEDED WITH SHORTER BATTERIES.)

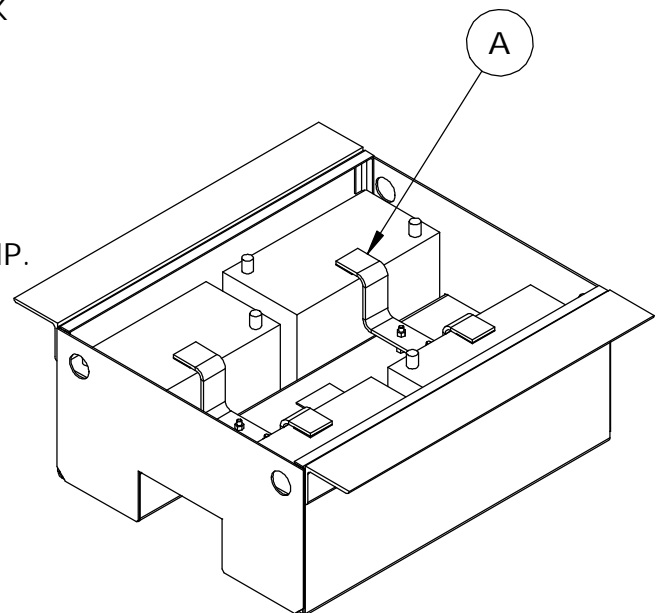


4) INSTALL BATTERIES INTO BOX EVENLY SPACED.

5) PEEL PAPER BACKING OFF OF THE ADHESIVE AND STICK THE PLASTIC PADS TO THE ENDS OF THE HOLD DOWNS. PLACE THE HOLD DOWNS ON TO THE STUDS.

6) ADJUST HEIGHT OF CLAMP WITH THE NUT INSTALLED IN STEP 3. POSITION NUT SLIGHTLY LOWER TO PROVIDE TENSION ON THE BATTERIES.

7) INSTALL AND TIGHTEN THE FINAL NUT ON TOP OF CLAMP.



RECOMMENDED MAINTENANCE:
CHECK ALL MOUNTING BOLTS FOR PROPER TORQUE AFTER THE FIRST 1000 MILES OF SERVICE AND PERIODICALLY INSPECT FOR PROPER TORQUE AND SOUNDNESS OF THE ENTIRE BOX INSTALLATION EVERY 90 DAYS OR LESS. IF DURING INSPECTION A DISCOVERY OF DAMAGED PARTS, CRACKS IN ANY PART OF THE UNIT, OR A FAILURE OF ANY PART OF THE UNIT IS DISCOVERED THE OPERATOR IS TO IMMEDIATELY REPLACE THE DISCOVERED PROBLEM.

E	4	49-4577	TAPE,FOAM 1" WIDE TWO SIDED VHB	2"
D	12	11-2111	NUT, HEX 5/16-18 SERRATED FLANGE	
C	4	11-0505	BOLT, HEX 5/16-18X2 ALL THRD ZN	
B	4	87-2219-033	PAD, BATTERY CLAMP HOLD DOWN	
A	2	87-2219-025	HOLD DOWN, BETWEEN FRAME BOX	

REVISION	LTR	DATE	DESCRIPTION	BY	SCALE: NONE	
A		4/24/12	CHANGED MOUNTING FROM 87-2818-004 (ECR7267)	TPK	DWN BY: TPK	
B		1/8/13	CHANGED FROM 31/2" BOLT TO 3" (ECR7246)	TPK	REF # 3509	
C		4/3/13	REMOVED SHEET 2 (3510 KIT) FROM DRAWING (ECR 7723)	TPK	WEIGHT	
					DATE 3/17/09	
					DWG LSRSD0105	REV C

TITLE BATTERY HOLD DOWN MOUNTING INSTRUCTIONS